

# AC304D-OD4

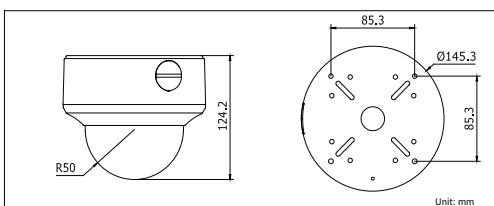
## 2MP HD-TVI Dome Camera



### Key features

- HD1080P Video Output
- Adopt HDTV Technology
- True Day/Night
- 2.8 - 12mm Vari-focal Lens
- OSD menu, 3D DNR, Smart IR
- Up to 40m IR Distance
- IP66 Weatherproof & Vandal Proof
- Up the Coax(via coaxial cable)
- 120 dB Wide Dynamic Range

### Dimensions



### Specifications

AC304D-OD4	
Camera	
Image Sensor	1 / 3" Progressive Scan CMOS
Signal System	PAL / NTSC
Effective Pixels	1920(H)*1080(V)
Min. Illumination	0.01 Lux @ (F1.2,AGC ON),0 Lux with IR 0.014 Lux @ (F1.4,AGC ON),0 Lux with IR
Shutter Speed	1/25(1/30) s to 1/50,000 s
Lens	2.8-12mm @ F1.4 Angle of view: 92° - 32°
Lens Mount	φ14
Angle Adjustment	Pan: 0 - 355°, Tilt: 0 - 80°, Rotation: ± 90°
Day & Night	ICR
Wide dynamic range	120 dB
Synchronization	Internal synchronization
Video Frame Rate	1080p@25fps/1080p@30fps
HD Video Output	1 Analog HD output
CVBS Output	1Vp-p Composite Output(75Ω / BNC)
S / N Ratio	More than 52dB
Menu	
Scene	Indoor, Outdoor, Indoor1, LOW-LIGHT
Camera ID	On/off (15 characters, position programmable)
AGC	Support
D/N Mode	Color/BW/EXT
White Balance	ATW, AWC-SET, Indoor, Outdoor, Manual
Privacy Mask	On/Off, maximum 8 zones
Motion Detection	On/Off, maximum 4 zones
BLC	Support
Anti-flicker	On/off
Language	English, Japanese, CHN1, CHN2, Korean, German, French, Italian, Spanish, Polish, Russian, Portuguese, Dutch, Turkish, Hebrew and Arabic
Function	Eclipse, Digital noise reduction, Digital zoom(62x), Slow shutter, Mirror, Defog, Defect pixel correction, SMART D-ZOOM
General	
Working Temperature / Humidity	-20 °C - 60 °C (-4 °F - 140 °F) Humidity 90% or less (non-condensing)
Power Supply	12 VDC ; -A: 12 VDC, 24 VAC
Power Consumption	12 VDC: Max. 4.5W ; 24 VAC: Max. 6.5W
Weather Proof Ratings	IP66
IR Range	Up to 40m
Impact Protection	IEC60068-2-75 test, Eh, 20J; EN50102, up to IK10.
Communication	Up the coax(need UTC controller) Protocol: Pelco-C(Coaxitron)
Dimensions	φ145.3 × 124.2 mm (φ5.72" × 4.89")
Weight	880 g (1.95 lb)